

# INTRODUCING THE *Toughest* SOLAR STORAGE TANK UNDER THE SUN



## HOW YOU BENEFIT



### BUILT TO LAST

Vitreous enamel tank with enhanced protection against corrosion.



### STRONGER DESIGN

Flat Plate collector with toughened glass which is resistant to breakage.



### LOW MAINTENANCE

Elegant simplicity provides efficiency, reliability and low maintenance, as a pump is not required to circulate water.



### SOLAHART WARRANTIES

5 year tank and collector warranty\* for peace of mind.

# ROOF-MOUNTED DIRECT SYSTEMS

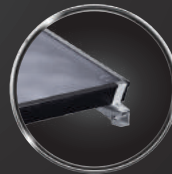
SOLAHART SUNHEAT SERIES - OPEN CIRCUIT THERMOSIPHON



Solahart is rated for high pressure water, so it can deliver a strong flow to many taps or showers at once.



Vitreous enamel tank protection offers defence against corrosion.



Solahart Flat Plate Collectors are manufactured using extra strong, toughened glass that is resistant to breaking. Flat plate collectors provide a stronger, safer application than evacuated tube collectors!

## Specifications Table

Model	151BPT
Tank Model	150RD18 & 150RD00
Storage Capacity	150 litres
Tank Dimensions	1620mm x 510mm x 510mm
System Dimensions	Pitched: 1670mm x 2490mm x 1120mm
	With Pitch: 1670mm x 2490mm x 570mm
Heating Unit	Copper sheath immersion element
Supply Voltage	220 – 240V 50 – 60Hz
Water Connections	Cold: Rp 3/4" Hot: Rp 3/4"
Rated Power	1.8 kW
Maximum Water Supply Pressure	800 kPa
TPR valve setting	1,000 kPa

Collector	BPT20007
Aperture	1.87m <sup>2</sup>
Dimensions	1943mm x 1027mm x 83mm
Absorber	Aluminium
Surface	Black polyester powder coat
Risers	Copper
Tray	0.45mm prepainted steel
Insulation	38mm polyester blanket
Glass	3.2mm tempered low iron

Solahart Solar Water Heaters have established an unparalleled reputation for quality and efficiency. With over 65 years experience in solar and more than 1 million systems sold worldwide, Solahart is a trusted Australian company with offices around the world. All our solar hot water systems are designed and manufactured for the harshest weather conditions.

Solahart Sunheat Series has a vitreous enamel lined solar storage tank installed on the roof directly coupled to the solar collectors. Copper is used in the collectors for its high thermal conductivity ensuring the maximum amount of heat energy is passed to the water. Solahart collector panels use low iron toughened glass for years of superior performance.

All Solahart tanks are constructed from mild steel with enhanced enamel tank protection, which is suited to a wider range of applications than stainless steel.

## Model Numbers

Solahart Thermosiphon Systems	Model	Pitched Roof Frame	Flat Roof Frame
		VN1000005	VN1000002
150L tank	150RD18	1	1
Collector	BPT20007	1	1
TPR optional	SP0262002	Option	Option
Cold Pipe Sub Assembly	VN1000004	1	1
Hot Pipe Sub Assembly	VN1000003	1	1

\* Every system is supplied with Tank, Collector and Hot and Cold pipes.

\* Solahart Sunheat Warranty Details: 5/1/1 warranty, 5 year cylinder and collector supply, 1 year parts, 1 year labour, applies only when installed as a complete system. Conditions apply.

# ROOF-MOUNTED DIRECT SYSTEMS

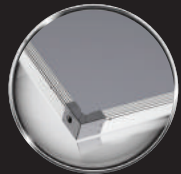
SOLAHART PREMIUM SERIES - OPEN CIRCUIT THERMOSIPHON



Solahart is rated for high pressure water, so it can deliver a strong flow to many taps or showers at once.



Solahart Super-Shield® Enamel Tank Protection offers optimum tank protection against corrosion.



Solahart Premium Series Flat Plate Collectors are manufactured using extra strong, toughened glass that is resistant to breaking. Flat plate collectors provide a stronger, safer application than evacuated tube collectors!



Solahart Premium 'L' Series is a solar water heater specifically designed to provide hot water free from the sun in medium to high solar gain areas. The black polyester powder coated aluminium absorber collects the sun's heat and transfers it to the water in the copper risers. The increase in temperature causes it to rise and move into the storage tank where it displaces cooler water which then travels back into the solar collectors to be heated by the sun.

The tank features **Solahart Super-Shield®** enamel for enhanced protection, as well as a protective sacrificial anode to improve the life of the tank.

The Solahart Premium Series is backed by a comprehensive 5 year warranty\* on tank, collector, parts and labour.



## Specifications Table

Model	181L	302L
Storage Capacity	180 litres	300 litres
Tank Dimensions	1620mm x 510mm x 510mm	2430mm x 510mm x 510mm
System Dimensions	1670mm x 2530mm x 510mm	2480mm x 2530mm x 510mm
Heating Unit	Copper sheath immersion element	
Supply Voltage	220 – 240V 50 – 60Hz	
Water Connections	Cold: Rp 1/2" Hot: Rp 1/2"	
Maximum Water Supply Pressure	800 kPa	
TPR valve setting	1,000 kPa	

Collector	L
Aperture	1.87m <sup>2</sup>
Dimensions	1943mm x 1027mm x 83mm
Absorber	Aluminium
Surface	Black polyester powder coat
Risers	Copper tube
Tray	0.7mm aluminium
Insulation	38mm polyester blanket
Glass	3.2mm tempered low iron

\* Solahart Premium Series Warranty Details: 5/5/5 warranty, 5 year cylinder and collector supply, 5 year parts, 5 year labour, applies only when installed as a complete system. Conditions apply.



## SOLAHART ENAMEL TANK PROTECTION

Solahart's unique, industry-leading blue enamel formula offers optimum tank protection against corrosion, as it is specifically designed to withstand the high temperatures solar water heaters are subjected to. During the manufacturing process, the tank is welded together utilising precision laser technology and the unique formula is applied with European flow coating technology to ensure a uniform enamel coating.

All Solahart tanks are constructed from mild steel with enhanced enamel tank protection, which is suited to a wider range of applications than stainless steel.



### Why is it so good?



#### SUPER-SHIELD

Industry-leading cobalt blue enamel especially designed for high temperature.



#### NEW WELDING

Precision Laser Welding Technology ensures all systems meet Solahart's strict quality control standards.



#### NEW COATING PROCESS

European application machine technology for uniform enamel thickness.



#### NEW FURNACE TECHNOLOGY

The final step in the process ensures stable temperature control for optimum enamel adhesion.



## SOLAHART HIGH-STRENGTH TOUGHENED GLASS

Solahart Flat Plate Collectors are manufactured using extra strong, toughened glass that is resistant to breaking. This toughened glass, provides a stronger, safer, more durable application than evacuated tube collectors.

All Evacuated Tube collectors suffer from performance degradation due to loss of vacuum. Solahart Flat Plate Collectors are built to last and do not rely on a vacuum for their performance. There are many Solahart systems that are over 20 years old and still working, providing hot water day after day.



To see how strong a Solahart collector is, check out this video - try doing this to an evacuated tube collector!



Email: [solahart@solahart.com](mailto:solahart@solahart.com)  
Website: [solahart.com](http://solahart.com)

Authorised Distributor